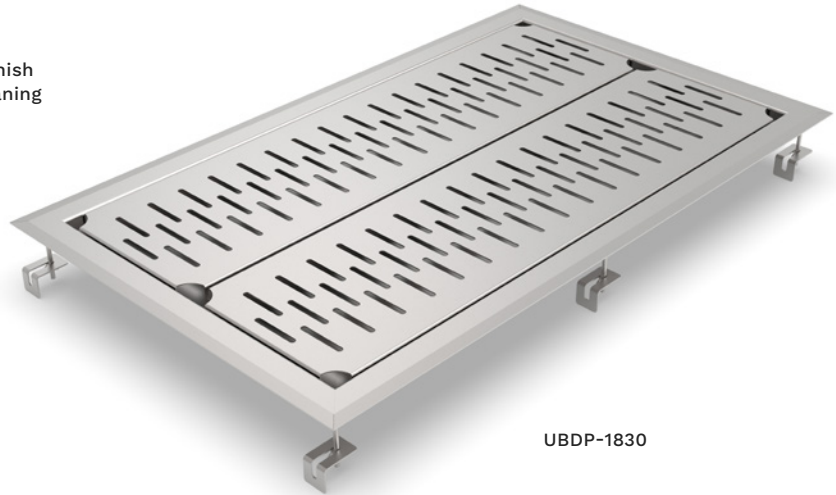


"UBDP" UNDERBAR DROP-IN DRIP PANS

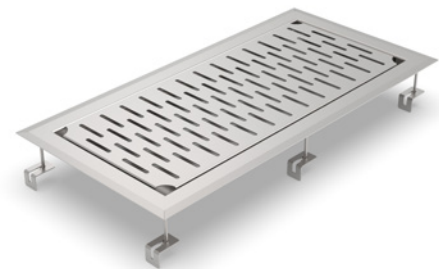
18GA, Bar Top Installation

FEATURES:

- 18GA Stainless Steel Construction
- Type 300 Stainless Steel With #4 Polish, Stain Finish
- Removable Grate With Finger Holes For Easy Cleaning
- 1/4" MPT Drain



UBDP-1830



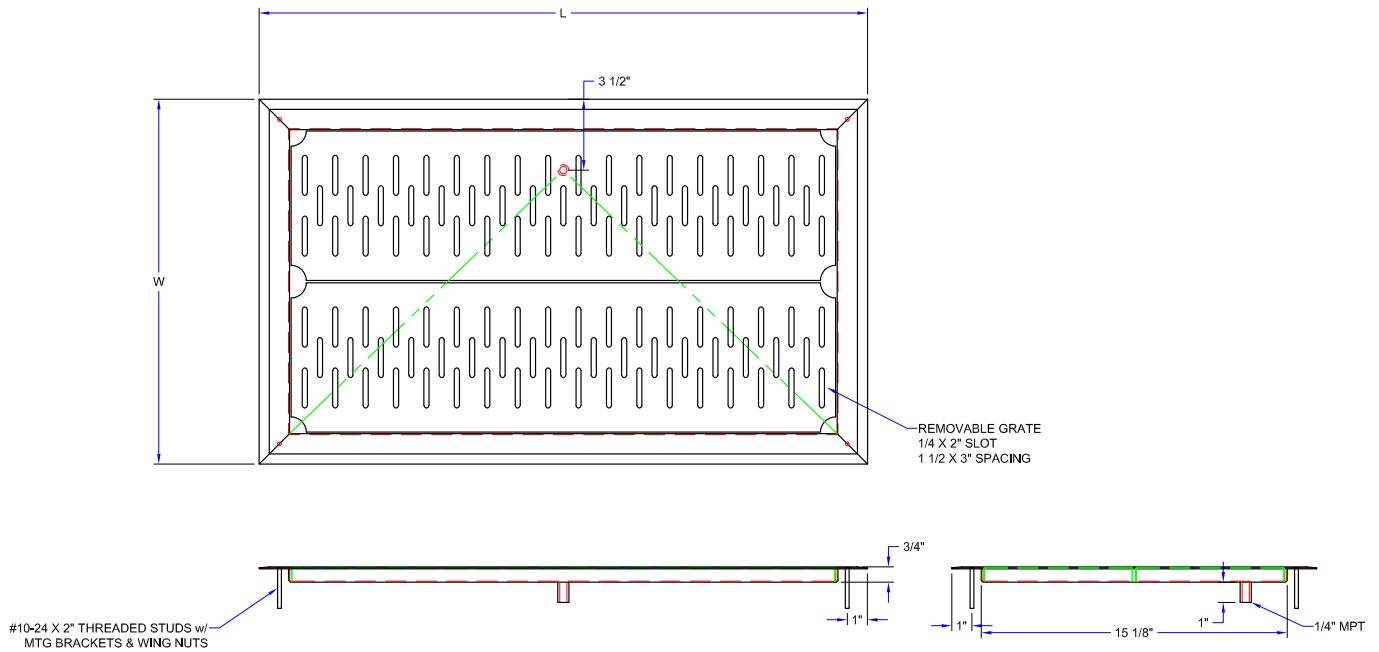
UBDP-1230

"UBDP" UNDERBAR DRIP PANS

MODEL	# OF GRATES	SIZE (L X W X H)	WEIGHT (LBS)
UBDP-1224	1	24"x12"x3/4"	9
UBDP-1230	1	30"x12"x3/4"	11
UBDP-1236	1	36"x12"x3/4"	13
UBDP-1242	1	42"x12"x3/4"	15
UBDP-1248	1	48"x12"x3/4"	17
UBDP-1824	2	24"x18"x3/4"	13
UBDP-1830	2	30"x18"x3/4"	17
UBDP-1836	2	36"x18"x3/4"	20
UBDP-1842	2	42"x18"x3/4"	23
UBDP-1848	2	48"x18"x3/4"	26

ALL DIMENSIONS ARE TYPICAL. TOLERANCE +/- .500". JOHN BOOS & CO. RESERVES THE RIGHT TO CHANGE SPECIFICATIONS WITHOUT NOTICE.

DETAILED SPECIFICATIONS



"UBDP" UNDERBAR DRIP PANS

MODEL	# OF GRATES	SIZE (LX W X H)	WEIGHT (LBS)
UBDP-1224	1	24"x12"x3/4"	9
UBDP-1230	1	30"x12"x3/4"	11
UBDP-1236	1	36"x12"x3/4"	13
UBDP-1242	1	42"x12"x3/4"	15
UBDP-1248	1	48"x12"x3/4"	17
UBDP-1824	2	24"x18"x3/4"	13
UBDP-1830	2	30"x18"x3/4"	17
UBDP-1836	2	36"x18"x3/4"	20
UBDP-1842	2	42"x18"x3/4"	23
UBDP-1848	2	48"x18"x3/4"	26

ALL DIMENSIONS ARE TYPICAL. TOLERANCE +/- .500". JOHN BOOS & CO. RESERVES THE RIGHT TO CHANGE SPECIFICATIONS WITHOUT NOTICE.