



John
BOOS

Since 1887

New & Improved
UNDERBAR EQUIPMENT





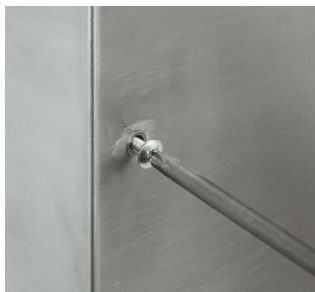
NEW & IMPROVED UNDERBAR EQUIPMENT

Engineered With Functionality In Mind

John Boos' newly designed underbar equipment is engineered to improve quality, ease of installation, and efficiency within the foodservice industry. The 18GA type 300 stainless steel construction provides durability and features new design elements such as a uniform 1-1/4" wide backsplash, removable mounting faucet plate, pre-installed threaded inserts for speed rails, and much more. Every piece of equipment comes standard with stainless steel legs, bracing and adjustable bullet feet. Available in our standard 21" wide or 18" slim-line widths to fit your specific project. Contact the John Boos team of experts for a one-on-one discussion on how we can help quote your next project.



18GA TYPE 300 STAINLESS
STEEL CONSTRUCTION



PRE-INSTALLED
THREADED INSERTS



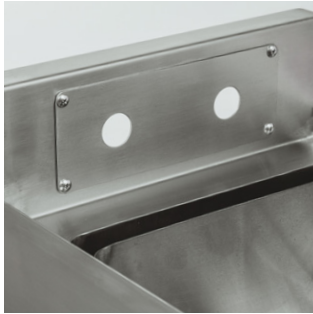
1-1/4" WIDE BACKSPLASH



STAINLESS STEEL LEGS,
BRACING & ADJ BULLET FEET

NEW DESIGN FEATURES

Each piece of new underbar equipment is uniquely designed to have a simplistic and efficient functionality. Throughout each product you will see the enhanced features that makes our products your preferred choice for new underbar equipment. (Note: Each product includes unique design features that might not be listed below. Call and speak to John Boos specialists for more information.)



REMOVABLE MOUNTING FAUCET PLATE

Allows for an ease of installation for all faucet and plumbing work.



REMOVABLE SODA LINE ACCESS PLATE

Easily run soda lines through the backplash of your ice bins.



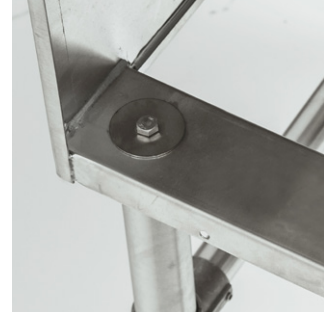
PRE-DRILLED ATTACHMENT HOLES

Securely attaches adjacent equipment together for a uniform underbar area.



PRE-INSTALLED THREADED INSERTS

Easy and secure installation for additional accessories such as speed rails, etc.



CHANNEL MOUNTED LEGS

Removable legs provide additional space to easily clean underneath the equipment.



UNDERBAR COMPARTMENT SINKS

Fabricated with 18GA 300 series stainless steel, these underbar compartment sinks exceed all modern underbar equipment standards. Available in a 3 or 4 compartment configuration to meet FDA required guidelines for properly washing tableware. These underbar compartment sinks are available in various sizes and can be purchased without drainboards or with a LH and RH drainboard. Note: Not to be used for hand washing.

FEATURES:

- 18GA 300 Series Stainless Steel
- 10"x14"x10" Deep Bowls With Corner Drains
- 4" O.C. Splash Faucet Holes With Removable Mounting Faucet Plate
- Bowls Are Fabricated, Not Deep Drawn
- Drainboard With Removable Perforated Insert
- Raised Marine Edge On Front And Sides
- Channel Mounted Stainless Steel Legs And Bracing With Adjustable Bullet Feet
- Includes Pre-Drilled Attachment Holes To Securely Attach Adjacent Equipment Together For A Uniform Underbar Area
- Includes "Z" Clips For Optional Wall Mounting/Securing
- Includes Overflow Stand Pipes (PB-OVF-BS)
- Requires Shallow Splash Mount Faucet (Sold Separately, PG. 14)
- Flexible Water Line Connectors Recommended With Shallow Mount Faucets (Sold Separately, PG. 14)



UBS3-1860-2D12



DRAINBOARD W/REMOVABLE PERFORATED INSERT



STABILIZING PIN SECURES PERFORATED INSERT



RAISED MARINE EDGE ON FRONT & SIDES



10"x14"x10" BOWL SIZES WITH CORNER DRAINS

SLIM-LINE - 18" WIDTH

3 COMPARTMENT	BOWL SIZE (L X W X D)	DRAINBOARD SIZE	OVERALL (L X W)	ECONOMY FAUCET	HEAVY DUTY FAUCET
UBS3-1836	3 - 10"x14"x10"	NONE	36"x18"	PBF-W2-10LF (Sold Separately, PG. 14)	PBF-4SM2-10LF (Sold Separately, PG. 14)
UBS3-1860-2D12	3 - 10"x14"x10"	(2) - 12" (LH & RH)	60"x18"		
UBS3-1872-2D18	3 - 10"x14"x10"	(2) - 18" (LH & RH)	72"x18"		
UBS3-1884-2D24	3 - 10"x14"x10"	(2) - 24" (LH & RH)	84"x18"		
4 COMPARTMENT	BOWL SIZE (L X W X D)	DRAINBOARD SIZE	OVERALL (L X W)	ECONOMY FAUCET	HEAVY DUTY FAUCET
UBS4-1848	4 - 10"x14"x10"	NONE	48"x18"	PBF-W2-10LF (Sold Separately, PG. 14)	PBF-4SM2-10LF (Sold Separately, PG. 14)
UBS4-1872-2D12	4 - 10"x14"x10"	(2) - 12" (LH & RH)	72"x18"		
UBS4-1884-2D18	4 - 10"x14"x10"	(2) - 18" (LH & RH)	84"x18"		
UBS4-1896-2D24	4 - 10"x14"x10"	(2) - 24" (LH & RH)	96"x18"		

STANDARD - 21" WIDTH

3 COMPARTMENT	BOWL SIZE (L X W X D)	DRAINBOARD SIZE	OVERALL (L X W)	ECONOMY FAUCET	HEAVY DUTY FAUCET
UBS3-2136	3 - 10"x14"x10"	NONE	36"x21"	PBF-W2-10LF (Sold Separately, PG. 14)	PBF-4SM2-10LF (Sold Separately, PG. 14)
UBS3-2160-2D12	3 - 10"x14"x10"	(2) - 12" (LH & RH)	60"x21"		
UBS3-2172-2D18	3 - 10"x14"x10"	(2) - 18" (LH & RH)	72"x21"		
UBS3-2184-2D24	3 - 10"x14"x10"	(2) - 24" (LH & RH)	84"x21"		
4 COMPARTMENT	BOWL SIZE (L X W X D)	DRAINBOARD SIZE	OVERALL (L X W)	ECONOMY FAUCET	HEAVY DUTY FAUCET
UBS4-2148	4 - 10"x14"x10"	NONE	48"x21"	PBF-W2-10LF (Sold Separately, PG. 14)	PBF-4SM2-10LF (Sold Separately, PG. 14)
UBS4-2172-2D12	4 - 10"x14"x10"	(2) - 12" (LH & RH)	72"x21"		
UBS4-2184-2D18	4 - 10"x14"x10"	(2) - 18" (LH & RH)	84"x21"		
UBS4-2196-2D24	4 - 10"x14"x10"	(2) - 24" (LH & RH)	96"x21"		

UNDERBAR CORNER SINKS

Our underbar corner sinks can be niched into recessed areas, providing more space behind the bar. The three compartment sink allows workers to properly wash, rinse and sanitize glassware which also includes (2) 18" drainboards to drain excess water back into the bowls. Each drainboard includes a removable perforated insert to allow for quick drying and easy cleaning. Note: Not to be used for hand washing.

FEATURES:

- 18GA 300 Series Stainless Steel
- Center Bowl: 14"x14"x10" With Corner Drain
- LH & RH Bowls: 10"x14"x10" With Corner Drains
- (2) 4" O.C. Splash Mount Faucet Holes With Removable Mounting Faucet Plate
- Bowls Are Fabricated, Not Deep Drawn
- Drainboard With Removable Perforated Insert
- Raised Marine Edge On Front And Sides
- Channel Mounted Stainless Steel Legs And Bracing With Adjustable Bullet Feet
- Includes Pre-Drilled Attachment Holes To Securely Attach Adjacent Equipment Together For A Uniform Underbar Area.
- Includes "Z" Clips For Optional Wall Mounting/Securing
- Includes Overflow Stand Pipes (PB-OVF-BS)
- Requires (2) Shallow Splash Mount Faucets (Sold Separately, PG. 14)
- Flexible Water Line Connectors Recommended With Shallow Mount Faucets (Sold Separately, PG. 14)



UBS3C-1848-2D18



DRAINBOARD W/REMOVABLE PERFORATED INSERT



STABILIZING PIN SECURES PERFORATED INSERT



RAISED MARINE EDGE ON FRONT & SIDES



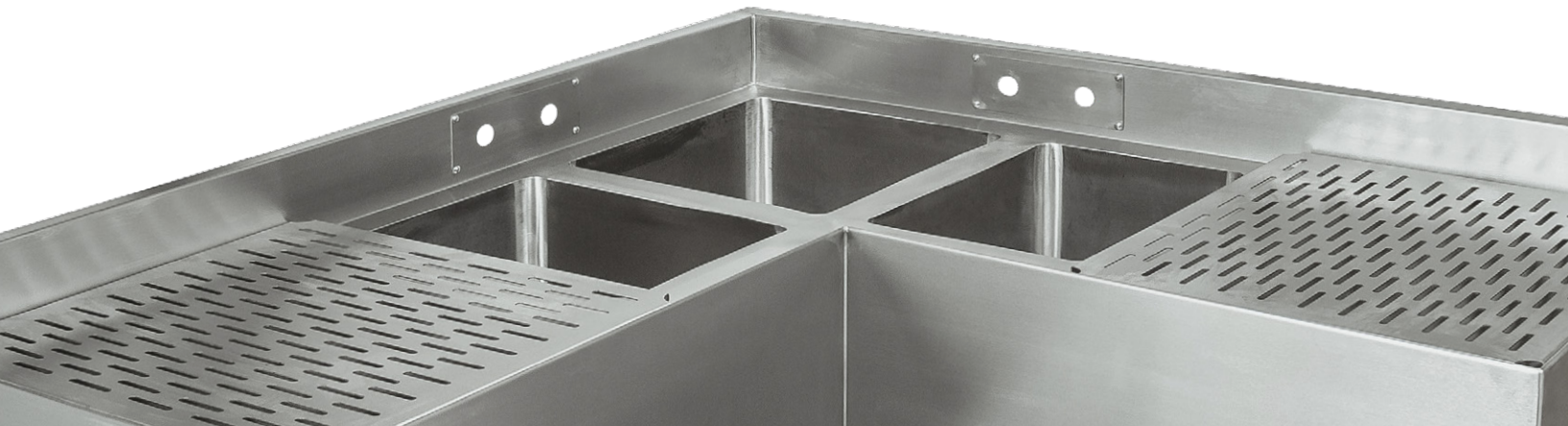
(3) 10"x14"x10" BOWL SIZES WITH CORNER DRAINS

SLIM-LINE - 18" WIDTH

3 COMPARTMENT	BOWL SIZE (L X W X D)	DRAINBOARD SIZE	OVERALL (L X W)	ECONOMY FAUCET	HEAVY DUTY FAUCET
UBS3C-1848-2D18	Center - 14"x14"x10" LH & RH - 10"x14"x10"	(2) - 18"	48"x18"	PBF-W2-10LF (Sold Separately, PG. 14)	PBF-4SM2-10LF (Sold Separately, PG. 14)

STANDARD - 21" WIDTH

3 COMPARTMENT	BOWL SIZE (L X W X D)	DRAINBOARD SIZE	OVERALL (L X W)	ECONOMY FAUCET	HEAVY DUTY FAUCET
UBS3C-2148-2D18	Center - 14"x14"x10" LH & RH - 10"x14"x10"	(2) - 18"	48"x21"	PBF-W2-10LF (Sold Separately, PG. 14)	PBF-4SM2-10LF (Sold Separately, PG. 14)



UNDERBAR DRAINBOARDS

Available in both straight and corner options, the John Boos® underbar drainboards help bartenders and servers prepare drinks while maintaining a clean work surface. The drainboard includes a removable perforated insert to help increase air circulation for quicker draining and drying.

UNDERBAR DRAINBOARD

FEATURES:

- 18GA 300 Series Stainless Steel
- Channel Mounted Stainless Steel Legs And Bracing With Adjustable Bullet Feet
- Includes Pre-Drilled Attachment Holes To Securely Attach Adjacent Equipment Together For A Uniform Underbar Area
- Pre-Installed Threaded Inserts For Additional Accessory Options
- Includes "Z" Clips For Optional Wall Mounting/Securing
- Drainboard With Removable Perforated Insert



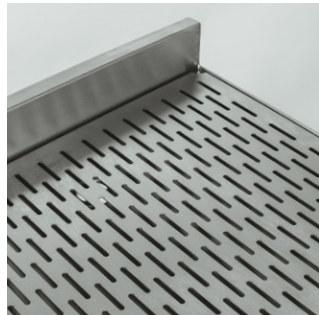
UBDB-1824
SHOWN WITH UBSR2-24
(SOLD SEPARATELY)

SLIM-LINE - 18" WIDTH

MODEL	L X W
UBDB-1812	12"x18"
UBDB-1818	18"x18"
UBDB-1824	24"x18"
UBDB-1830	30"x18"
UBDB-1836	36"x18"

STANDARD - 21" WIDTH

MODEL	L X W
UBDB-2112	12"x21"
UBDB-2118	18"x21"
UBDB-2124	24"x21"
UBDB-2130	30"x21"
UBDB-2136	36"x21"



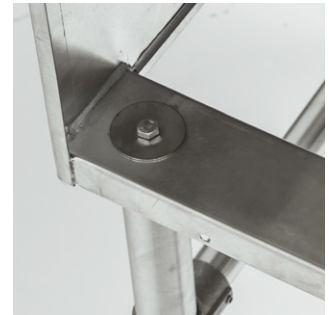
DRAINBOARD W/REMOVABLE
PERFORATED INSERT



CREASED DECK
WITH 1-3/8" DRAIN



PRE-INSTALLED
THREADED INSERTS



CHANNEL MOUNTED LEGS



UBDB-1818-90-IC

UNDERBAR CORNER DRAINBOARD

FEATURES:

- 18GA 300 Series Stainless Steel
- Channel Mounted Stainless Steel Legs And Bracing With Adjustable Bullet Feet
- Includes Pre-Drilled Attachment Holes To Securely Attach Adjacent Equipment Together For A Uniform Underbar Area
- Includes "Z" Clips For Optional Wall Mounting/Securing
- Drainboard With Removable Perforated Insert

SLIM-LINE - 18" WIDTH

MODEL	L X W
UBDB-1818-90-IC	18"x18"

STANDARD - 21" WIDTH

MODEL	L X W
UBDB-2121-90-IC	21"x21"

UNDERBAR GLASS RACK STORAGE CABINET

Our underbar glass rack storage cabinet can hold up to 3 full glass racks while keeping glassware sanitary and away from damage. The adjustable rack slides allows for (2) glass racks that includes tall stemware or (3) glass racks with standard height glassware. (Glass racks not included.) The drainboard includes a drain hose and comes standard with removable stainless steel bolt-on legs and adjustable feet.

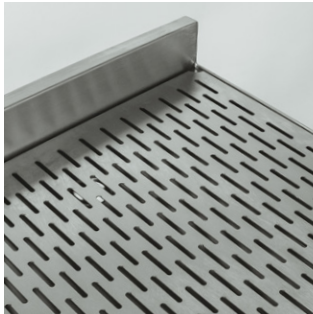
FEATURES:

- 18GA 300 Series Stainless Steel
- Includes Drain Hose
- Drainboard With Removable Perforated Insert
- Bolt-On Stainless Steel Legs With Adjustable Bullet Feet
- Adjustable Rack Slides: Supports (2) 20"x20" Glass Racks With Tall Stemware Or (3) 20"x20" Glass Racks With Standard Height Glassware (Not Included)
- Includes "Z" Clips For Optional Wall Mounting/Securing
- Includes Pre-Drilled Attachment Holes To Securely Attach Adjacent Equipment Together For A Uniform Underbar Area

MODEL	L X W
UBGR-2124	24"x21"



UBGR-2124



DRAINBOARD W/REMOVABLE PERFORATED INSERT



ADJUSTABLE RACK SLIDES



DRAIN HOSE (INCLUDED)



BOLT-ON STAINLESS LEGS W/ADJUSTABLE FEET

UNDERBAR BAR DRAINS

- 18GA Type 300 Stainless Steel With #4 Polish, Satin Finish
- 4" Front To Back Through
- 8" Front To Back Overall Depth
- 3/4" Deep Trough
- Removable Perforated Grate With Finger Holes
- Drainpipe 1" Long With 1/4" MPT Threads



UBDR-42



DRAINPIPE

BAR DRAINS

MODEL	DESCRIPTION
UBDR-12	12"x8"
UBDR-18	18"x8"
UBDR-24	24"x8"
UBDR-30	30"x8"
UBDR-36	36"x8"
UBDR-42	42"x8"
UBDR-48	48"x8"



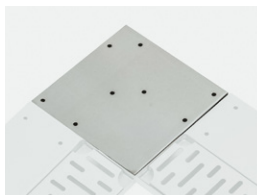
UBDR-45-IC



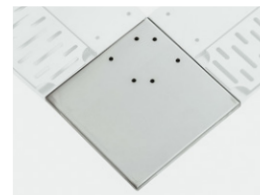
UBDR-45-OC

CORNER FILLERS

MODEL	DESCRIPTION
UBDR-90-IC	90° Inside Corner
UBDR-90-OC	90° Outside Corner
UBDR-45-IC	45° Inside Corner
UBDR-45-OC	45° Outside Corner



UBDR-90-IC



UBDR-90-OC

UNDERBAR INSULATED ICE BINS

John Boos® underbar insulated ice bins provide a convenient location for ice storage and cold drinks. The new design includes pre-installed threaded inserts for additional accessories such as our single or double speed rails. Available with or without a solid aluminum cold plate and is available in our Slim-Line 18" widths or standard 21" widths. The removable soda line access plates are available on all cold plate models to easily run soda lines from the cold plate, through the backsplash, into the soda gun manifold.

FEATURES:

UNDERBAR ICE BIN

- 18GA 300 Series Stainless Steel
- Insulated Ice Bin 12" Deep With Drain
- Includes Removable Soda Line Access Plate On Cold Plate Models Only
- Includes Pre-Drilled Attachment Holes To Securely Attach Adjacent Equipment Together For A Uniform Underbar Area
- Gusset Mounted Stainless Steel Legs And Bracing With Adjustable Bullet Feet
- Pre-Installed Threaded Inserts For Additional Accessory Options
- 29-1/2" Working Height
- Ice Bin Lids Included



UBIB-1824-CP7
SHOWN WITH UBSR2-24
(SOLD SEPARATELY)

COLD PLATE

- Stainless Steel Circuits In Solid Aluminum Plate
- Available In 7-Circuit And 10-Circuit Cold Plate

SLIM-LINE 18" WIDTH

L X W	W/O COLD PLATE	W/7-CIRCUIT COLD PLATE	W/10-CIRCUIT COLD PLATE
12"x18"	UBIB-1812	-	-
24"x18"	UBIB-1824	UBIB-1824-CP7	-
30"x18"	UBIB-1830	UBIB-1830-CP7	UBIB-1830-CP10
36"x18"	UBIB-1836	UBIB-1836-CP7	UBIB-1836-CP10

STANDARD - 21" WIDTH

L X W	W/O COLD PLATE	W/7-CIRCUIT COLD PLATE	W/10-CIRCUIT COLD PLATE
12"x21"	UBIB-2112	-	-
24"x21"	UBIB-2124	UBIB-2124-CP7	-
30"x21"	UBIB-2130	UBIB-2130-CP7	UBIB-2130-CP10
36"x21"	UBIB-2136	UBIB-2136-CP7	UBIB-2136-CP10



PRE-INSTALLED THREADED INSERTS FOR ADDITIONAL ACCESSORY OPTIONS



REMOVABLE SODA LINE ACCESS PLATES (COLD PLATE MODELS ONLY)



ADD-ON COCKTAIL LID WITH BOTTLE WELL HOLDER

MODEL	DESCRIPTION	FITS SIZES
UBIBL-1824-BWH	Slim-Line - 18" Width	24"x18"
UBIBL-1830-BWH	Slim-Line - 18" Width	30"x18"
UBIBL-1836-BWH	Slim-Line - 18" Width	36"x18"
UBIBL-2124-BWH	Standard - 21" Width	24"x21"
UBIBL-2130-BWH	Standard - 21" Width	30"x21"
UBIBL-2136-BWH	Standard - 21" Width	36"x21"

ADD-ON BOTTLE WELL HOLDER

MODEL	DESCRIPTION
UBBWH-18	Slim-Line - 18" Width Only
UBBWH-21	Standard - 21" Width Ice Bins Only

UNDERBAR INSULATED DROP-IN ICE BINS

Constructed with a 14GA stainless steel deck and 18GA stainless steel base, these insulated drop-in ice bins keep your ice cold for an extended period of time. Included is a two-piece sliding ice bin cover allowing servers/bartenders easy and efficient access to ice cold drinks. Perfect for bars and concession stands!

FEATURES:

UNDERBAR ICE BIN

- 14GA Type 300 Stainless Steel Deck
- 18GA Type 300 Stainless Steel Base
- Includes Ice Bin Lid and Drain

COLD PLATE

- Stainless Steel Circuits In Solid Aluminum Plate
- Available In 10-Circuit



DROP-IN ICE BINS

MODEL	OVERALL SIZE (L X W X H)
PB-DIIB1218	18"x12"x14-3/8"
PB-DIIB2218	18"x22"x14-3/8"
PB-DIIB2818	18"x28"x14-3/8"
PB-DIIB3418	18"x34"x14-3/8"



PB-DIIB2818

DROP-IN ICE BINS WITH 10-CIRCUIT COLD PLATE

MODEL	OVERALL SIZE (L X W X H)
PB-DIIB2820CP10	20"x28"x14-3/8"
PB-DIIB3420CP10	20"x34"x14-3/8"



PB-DIIB2820CP10



CENTRALLY LOCATED DRAIN



10-CIRCUIT COLD PLATE (AVAILABLE ON CERTAIN MODELS)

UNDERBAR SPEED RAILS

- 18GA 300 Series Stainless Steel
- Keyhole Mount

LENGTH	SINGLE TIER	DOUBLE TIER
12"	UBSR1-12	UBSR2-12
18"	UBSR1-18	UBSR2-18
24"	UBSR1-24	UBSR2-24
30"	UBSR1-30	UBSR2-30
36"	UBSR1-36	UBSR2-36
42"	UBSR1-42	UBSR2-42
48"	UBSR1-48	UBSR2-48



UBSR1-30

UNDERBAR HAND SINK WITH DISPENSERS

Fabricated with 18GA 300 series stainless steel, these all-in-one underbar hand sinks provide all of the features you need to efficiently get the job done. The included soap and towel dispenser make quick work to wash and dry the user's hands. The included attachment holes allow you to safely and securely attach to other John Boos® Underbar Equipment making these the ultimate hand washing stations.

FEATURES:

- 18GA 300 Series Stainless Steel
- 4" O.C. Splash Mount Faucet Holes With Removable Mounting Faucet Plate
- Soap & Paper Towel Dispenser
- Channel Mounted Stainless Steel Legs And Bracing With Adjustable Bullet Feet
- Includes Pre-Drilled Attachment Holes To Securely Attach Adjacent Equipment Together For A Uniform Underbar Area
- Includes "Z" Clips For Optional Wall Mounting/Securing
- Requires Shallow Splash Mount Faucet (Sold Separately, PG. 14)
- Flexible Water Line Connectors Recommended With Shallow Mount Faucets (Sold Separately, PG. 14)

SLIM-LINE - 18" WIDTH

MODEL	L X W	ECONOMY FAUCET	HEAVY DUTY FAUCET
UBHS-1812	12"x18"	PBF-W2-3GLF (Sold Separately)	PBF-4SM2-3GLF (Sold Separately)

STANDARD - 21" WIDTH

MODEL	L X W	ECONOMY FAUCET	HEAVY DUTY FAUCET
UBHS-2112	12"x21"	PBF-W2-3GLF (Sold Separately)	PBF-4SM2-3GLF (Sold Separately)



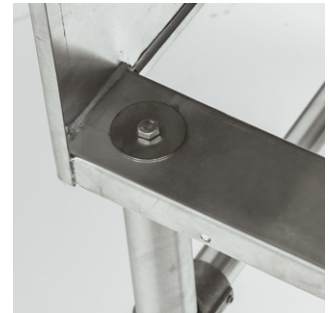
SOAP DISPENSER



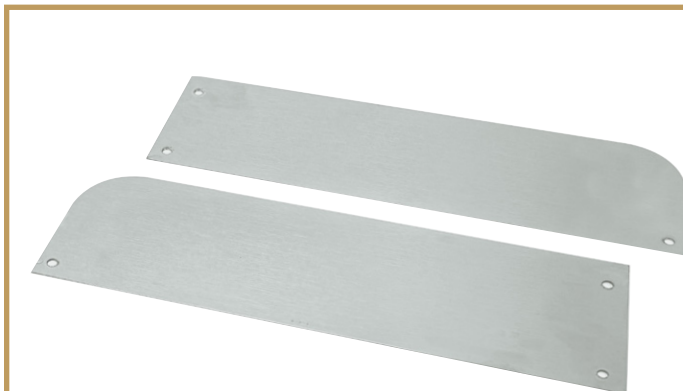
PAPER TOWEL DISPENSER



REMOVABLE MOUNTING FAUCET PLATE



CHANNEL MOUNTED LEGS



UNDERBAR SIDE SPLASH KIT

- 18GA Type 300 Stainless Steel
- Each Side Splash Sold Separately

SLIM-LINE - 18" WIDTH

MODEL	DESCRIPTION	L X W
UBSS-18-L	LH - (3) Screws	18"x5"
UBSS-18-R	RH - (3) Screws	18"x5"

STANDARD - 21" WIDTH

MODEL	DESCRIPTION	L X W
UBSS-21-L	LH - (3) Screws	21"x5"
UBSS-21-R	RH - (3) Screws	21"x5"

UNDERBAR DUMP SINKS

Available in both 18" Slim-Line and 21" Standard widths, these underbar dump sinks provide a quick and easy way to dispose of liquids from bussed glasses and other tableware. Featuring an 18GA construction with a fabricated sink bowl, a stainless steel scrap basket, and pre-installed threaded inserts for attaching additional accessory options.

FEATURES:

- 18GA 300 Series Stainless Steel
- Fabricated Sink Bowl: 14"x10"x6"
- Stainless Steel Scrap Basket Included
- 4" O.C. Splash Mount Faucet Holes With Removable Mounting Faucet Plate
- Channel Mounted Stainless Steel Legs And Bracing With Adjustable Bullet Feet
- Includes Pre-Drilled Attachment Holes To Securely Attach Adjacent Equipment Together For A Uniform Underbar Area
- Includes "Z" Clips For Optional Wall Mounting/Securing
- Pre-Installed Threaded Inserts For Additional Accessory Options
- Requires Shallow Splash Mount Faucet (Sold Separately, PG. 14)
- Flexible Water Line Connectors Recommended With Shallow Mount Faucets (Sold Separately, PG. 14)



UBDS-2112

SLIM-LINE - 18" WIDTH

MODEL	L X W	ECONOMY FAUCET	HEAVY DUTY FAUCET
UBDS-1812	12"x18"	PBF-W2-6LF (Sold Separately)	PBF-4SM2-6LF (Sold Separately)

STANDARD - 21" WIDTH

MODEL	L X W	ECONOMY FAUCET	HEAVY DUTY FAUCET
UBDS-2112	12"x21"	PBF-W2-6LF (Sold Separately)	PBF-4SM2-6LF (Sold Separately)



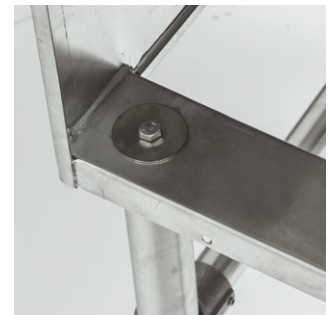
STAINLESS STEEL
SCRAP BASKET



CREASED DECK
WITH CORNER DRAIN



REMOVABLE MOUNTING
FAUCET PLATE

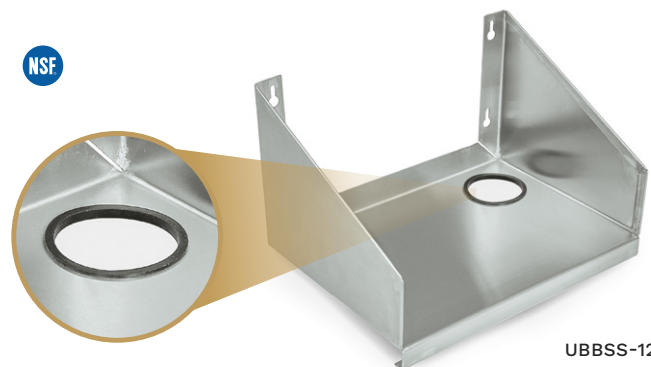


CHANNEL MOUNTED LEGS

UNDERBAR BOLT-ON BLENDER SHELF

- 18GA 300 Series Stainless Steel
- Bolt-On
- Electric Cord Cut-Out With Rubber Grommet

MODEL	L X W
UBBSS-12	12"x8"
UBBSS-18	18"x8"



UBBSS-12

UNDERBAR BLENDER STATIONS WITH DUMP SINK



The John Boos® blender stations come in both slim-line 18" widths as well as the standard 21" widths. Both sizes include a fabricated dump sink (faucet sold separately, PG. 14) as well as the blender platform. A 2" rubber grommet allows for the blender electrical cord to be sufficiently routed underneath the unit.

FEATURES:

- 18GA 300 Series Stainless Steel
- 4" O.C. Splash Mount Faucet Holes With Removable Mounting Faucet Plate
- Channel Mounted Stainless Steel Legs And Bracing With Adjustable Bullet Feet
- Includes Pre-Drilled Attachment Holes To Securely Attach Adjacent Equipment Together For A Uniform Underbar Area
- Includes "Z" Clips For Optional Wall Mounting/Securing
- 2" Rubber Grommet To Route Electrical Cord
- 29-1/2" Working Height
- Requires Shallow Splash Mount Faucet (Sold Separately, PG. 14)
- Flexible Water Line Connectors Recommended With Shallow Mount Faucets (Sold Separately, PG. 14)

SLIM-LINE - 18" WIDTH

MODEL	FAB SINK BOWL SIZE	L X W	ECONOMY FAUCET	HEAVY DUTY FAUCET
UBBS-1824	14"x10"x6"	24"x18"	PBF-W2-6LF (Sold Separately)	PBF-4SM2-6LF (Sold Separately)

STANDARD - 21" WIDTH

MODEL	FAB SINK BOWL SIZE	L X W	ECONOMY FAUCET	HEAVY DUTY FAUCET
UBBS-2112	10"x8"x6"	12"x21"	PBF-W2-3GLF (Sold Separately)	PBF-4SM2-3GLF (Sold Separately)



UBBS-1824



UBBS-2112



REMOVABLE MOUNTING FAUCET PLATE



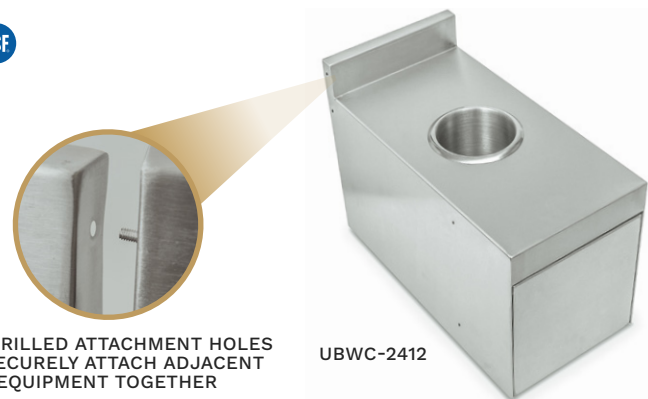
PRE-DRILLED ATTACHMENT HOLES

UNDERBAR TRASH RECEPTACLE COVER WITH WASTE CHUTE



- 18GA 300 Series Stainless Steel
- Includes Pre-Drilled Attachment Holes To Securely Attach Adjacent Equipment Together For A Uniform Underbar Area
- Removable Trash Chute
- Mounts Between Existing Equipment
- Includes "Z" Clips For Optional Wall Mounting/Securing
- Accommodates Rubbermaid Slim Jim® 16 Gal Trash Can (22" L X11" W X25" H) Not Included

MODEL	L X W
UBWC-2412	12"x24"



PRE-DRILLED ATTACHMENT HOLES TO SECURELY ATTACH ADJACENT EQUIPMENT TOGETHER

UBWC-2412

UNDERBAR LIQUOR DISPLAY RACK

Offered in both 3 step and 4 step options, the underbar liquor display rack holds standard 750ml liquor bottles. The 45° angled bottle dividers allow for quick and easy labeling of specific bottle locations for better bartending efficiency.

FEATURES:

- 18GA 300 Series Stainless Steel
- 3 Or 4 Step Liquor Display
- Channel Mounted Stainless Steel Legs And Bracing With Adjustable Bullet Feet
- Includes Pre-Drilled Attachment Holes To Securely Attach Adjacent Equipment Together For A Uniform Underbar Area
- Includes "Z" Clips For Optional Wall Mounting/Securing
- 45° Angled Bottle Dividers For Easy Labeling

SLIM-LINE - 18" WIDTH - 3 STEP

MODEL	L X W
UBLD-1812	12"x18"
UBLD-1818	18"x18"
UBLD-1824	24"x18"

STANDARD - 21" WIDTH - 4 STEP

MODEL	L X W
UBLD-2112	12"x21"
UBLD-2118	18"x21"
UBLD-2124	24"x21"



UBLD-2124

SODA GUN HOLDER

FEATURES:

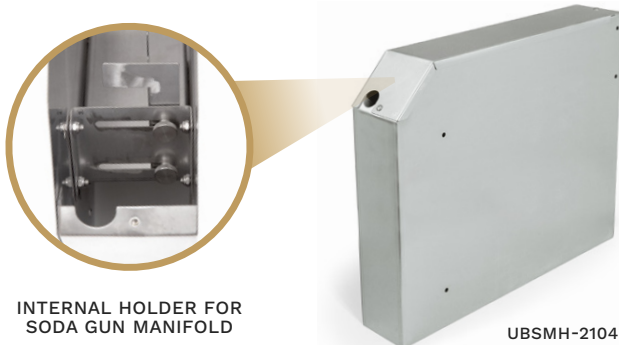
- 18GA 300 Series Stainless Steel
- Includes Pre-Drilled Attachment Holes To Securely Attach Adjacent Equipment Together For A Uniform Underbar Area
- Mounts Between Existing Equipment
- Removable Top
- Internal Holder For Soda Gun Manifold

SLIM-LINE - 18" WIDTH

MODEL	L X W
UBSMH-1804	4"x18"x17"

STANDARD - 21" WIDTH

MODEL	L X W
UBSMH-2104	4"x21"x17"



INTERNAL HOLDER FOR
SODA GUN MANIFOLD

UBSMH-2104



UNDERBAR POINT-OF-SALE CABINET

Built from 18GA 300 series stainless steel, these point-of-sale cabinets will last a lifetime. With a lockable vented door and a 12"x12" cutout in the back, these cabinets will house your CPU without restricting airflow. The 6" high back and side splashes also help to protect the register and your POS system.

FEATURES:

- 18GA 300 Series Stainless Steel
- 6" High Back And Side Splashes
- 2" Rubber Grommet In Top Back Center To Route Cables
- Includes Pre-Drilled Attachment Holes To Securely Attach Adjacent Equipment Together For A Uniform Underbar Area
- Bolt-On Stainless Steel Legs And Bracing With Adjustable Bullet Feet
- Right Hand Hinged Door With Lock
- Vented Door For Increased Air Circulation
- 14-1/4" Opening In Front Base To House CPU
- 12"x12" Cutout In Back Of Unit For Electrical Accessibility

SLIM-LINE - 18" WIDTH

MODEL	L X W
UBPS-2418-R	18"x24"

STANDARD - 21" WIDTH

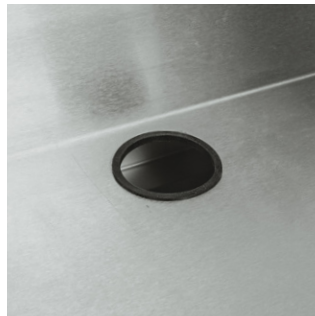
MODEL	L X W
UBPS-2424-R	24"x24"



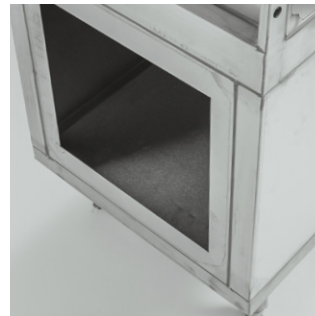
UBPS-2418-R



HINGED DOOR WITH LOCK



2" RUBBER GROMMET



12"x12" CUTOUT IN BACK



VENTED FRONT DOOR

UNDERBAR FAUCETS & PLUMBING OPTIONS



PBF-W2-6LF



PBF-W2-10LF



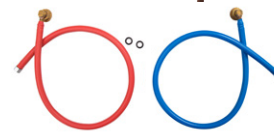
PBF-W2-3GLF



PBF-4SM2-6LF



PBF-4SM2-10LF



PB-WL-36



PBF-4SM2-3GLF

FAUCET FEATURES:

- Lead Free Faucets
- 4" On Center
- 1/4 Turn Ceramic Cartridges
- Color Coded Hot/Cold Indicators
- Integral Check Valve
- 1/2" NPT Faucet Head
- Chrome Finish
- Heavy Duty Internals: Cast Stainless Steel
- Economy Internals: Brass

MODEL	DESCRIPTION
PBF-W2-6LF	Economy Faucet - Splash Mount, 6" Swing Spout
PBF-W2-10LF	Economy Faucet - Splash Mount, 10" Swing Spout
PBF-W2-3GLF	Economy Faucet - Splash Mount, 3" Gooseneck Spout
PBF-4SM2-6LF	Heavy Duty Faucet - Splash Mount, 6" Swing Spout
PBF-4SM2-10LF	Heavy Duty Faucet - Splash Mount, 10" Swing Spout
PBF-4SM2-3GLF	Heavy Duty Faucet - Splash Mount, 3" Gooseneck Spout
PB-WL-36	Flexible Water Line Connectors - (2) Hoses Included, (1) Red For Hot And (1) Blue For Cold

UNDERBAR STORAGE CABINET WITH DRAINBOARD

This dual-purpose cabinet features a sufficiently sized drainboard and a lockable storage cabinet. The drainboard includes a removable perforated insert while the large lockable storage cabinet can securely hold personal items, extra bottles, receipt paper, and more. The removable bolt-on stainless steel legs allow for a secure wall mounting option using the provided "Z" clips.

FEATURES:

- 18GA 300 Series Stainless Steel
- Drainboard With Removable Perforated Insert
- Includes Drain Hose
- Right Hand Hinged Door With Lock
- Includes "Z" Clips For Optional Wall Mounting/Securing
- Bolt-On Stainless Steel Legs & Bracing w/Adj. Bullet Feet
- Includes Pre-Drilled Attachment Holes To Securely Attach Adjacent Equipment Together For A Uniform Underbar Area

SLIM-LINE - 18" WIDTH

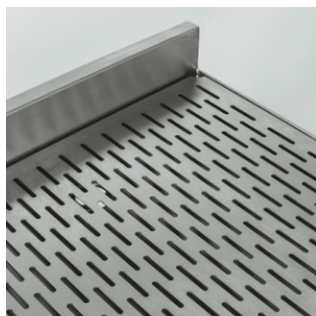
MODEL	L X W
UBSC-1818-R	18"x18"
UBSC-1824-R	24"x18"

STANDARD - 21" WIDTH

MODEL	L X W
UBSC-2118-R	18"x21"
UBSC-2124-R	24"x21"



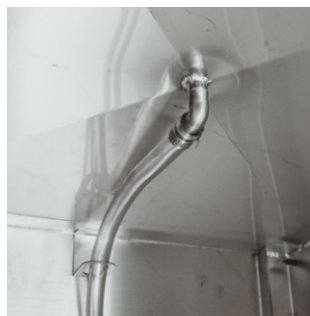
UBSC-2124



DRAINBOARD W/REMOVABLE PERFORATED INSERT



HINGED DOOR WITH LOCK



DRAIN HOSE (INCLUDED)



BOLT-ON STAINLESS LEGS W/ADJUSTABLE FEET





3601 S. BANKER ST. • EFFINGHAM, IL 62401
PH: (888) 431-2667 • FAX: (800) 433-2667 • JOHNBOOS.COM
EMAIL: SALES@JOHNBOOS.COM • PURCHASEORDERS@JOHNBOOS.COM

